



**2301 Shiloh Rose Pkwy
Bondurant, IA 50035**

FOR LEASE



Property Details

- **Building Size: 32,295 SF**
- **Available Space:
1,741 SF - 32,257 SF**
- **Lease Rate:
\$8.50 - \$10.50/PSF NNN**
- **Delivery: Q1 2023**
- **Zoning: M-1 Light Industrial**
- **Wall Height: 21' - 24'**
- **Drive-In's: 10
2 (14' x 14') 8 (12' x 14')**
- **Dock Doors: 4**

Dillon Temple
(515) 669-1238
dillon@anglerealty.com

Derek Temple
(515) 778-2601
derek@templeres.com

Rico Starling
(515) 360-7777
rico@anglerealty.com



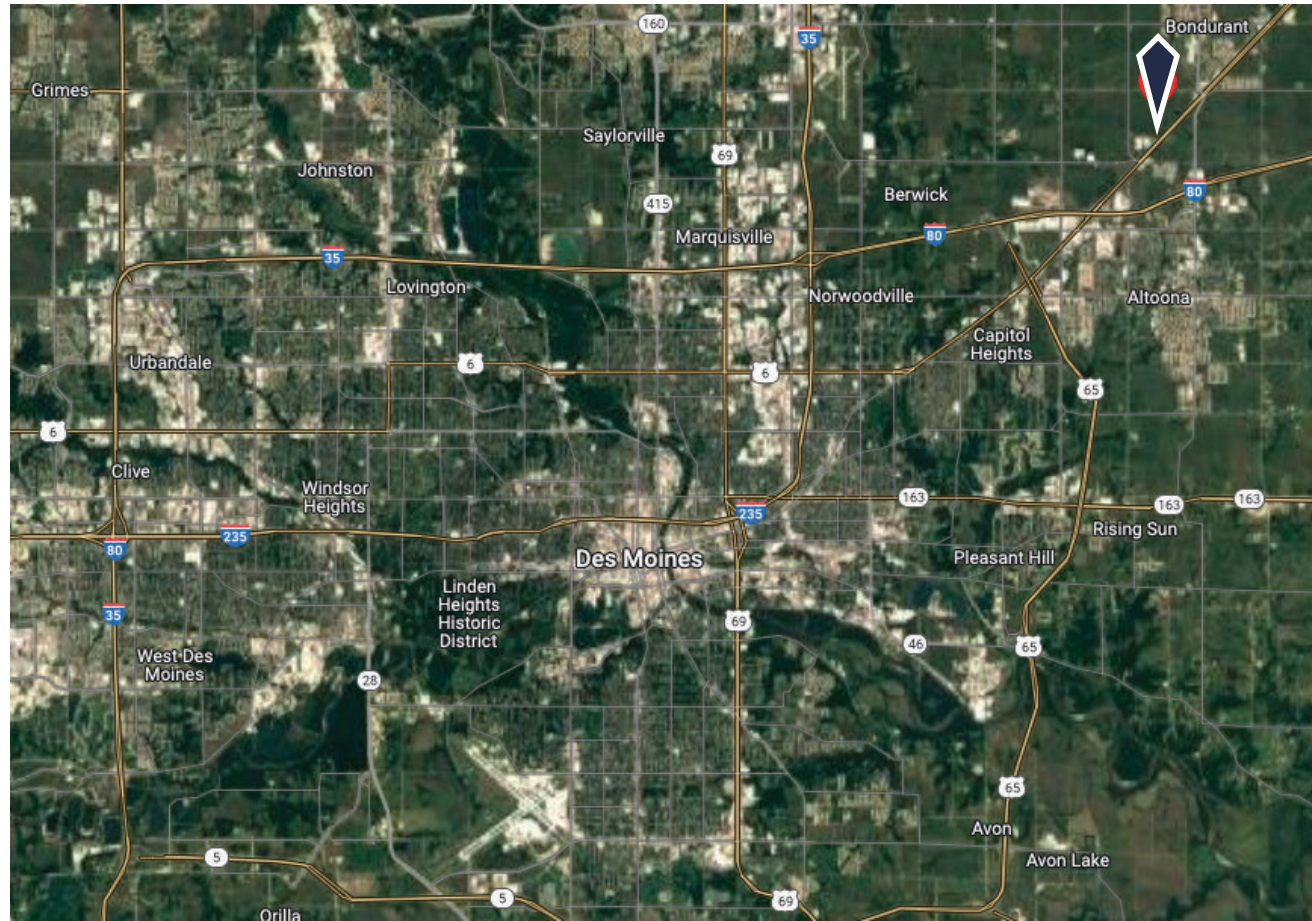
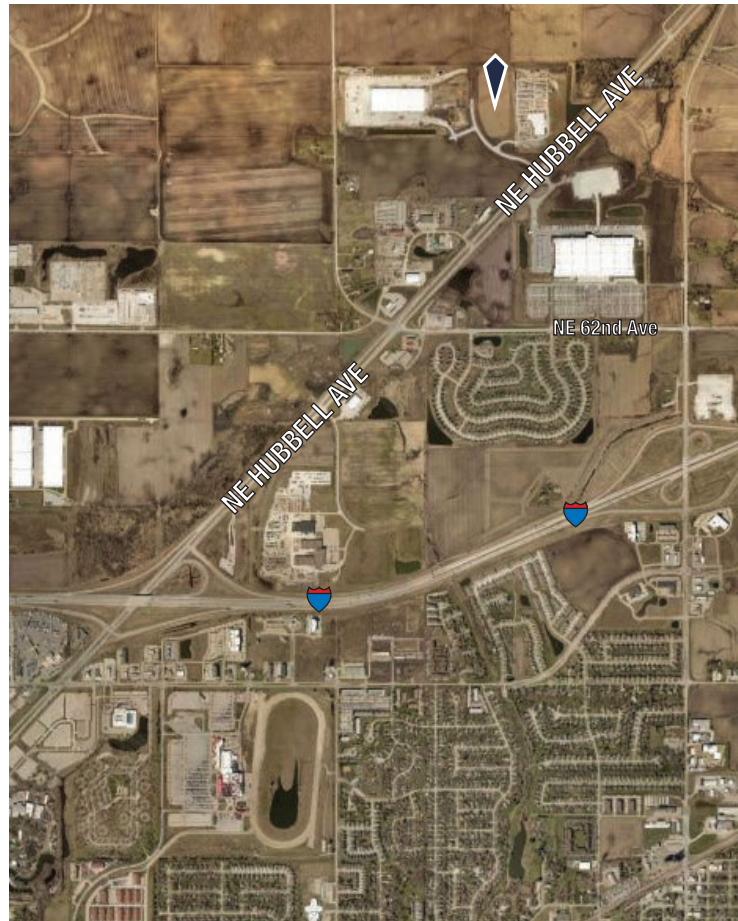
info@anglerealty.com | 2400 86th St. STE 23 Urbandale, IA 50322 | www.anglerealty.com

The information contained herein, we believe, has been obtained from reasonably reliable sources, and we have no reason to doubt the accuracy of such information; however, no warranty or guarantee either expressed or implied, is made with respect to the accuracy thereof. All such information submitted is subject to error, omissions, or changes in conditions, prior to sale, lease, or withdrawal without notice. All information contained herein should be verified to the satisfaction of the persons relying thereon. Angle, LLC D/B/A Angle Realty is licensed to sell real estate in the State of Iowa.

Licensed to sell real estate in the State of Iowa

**2301 Shiloh Rose Pkwy
Bondurant, IA 50035**

GPS COORDINATES: 41.692574, -93.475321



Dillon Temple

(515) 669-1238

dillon@anglerealty.com

Derek Temple

(515) 778-2601

derek@templeres.com

Rico Starling

(515) 360-7777

rico@anglerealty.com

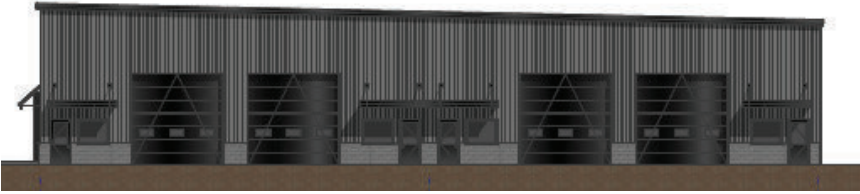


Lease Plan

2301 Shiloh Rose Pkwy
Bondurant, IA 50035



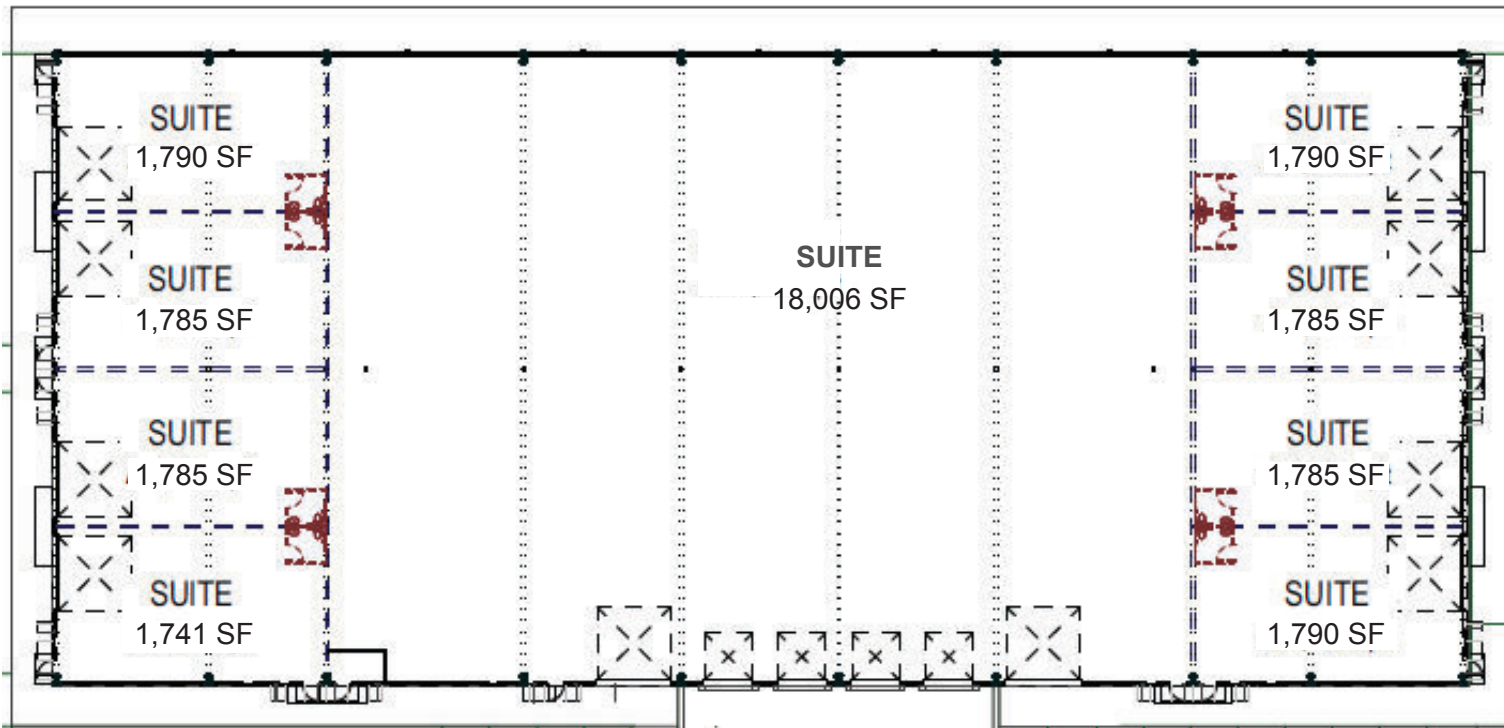
West (Front)



South



North



*Max Contiguous Space: 32,257 SF - Demising Walls Installed Based On Tenant's Need.

Dillon Temple

(515) 669-1238

dillon@anglerealty.com

Derek Temple

(515) 778-2601

derek@templeres.com

Rico Starling

(515) 360-7777

rico@anglerealty.com

