

FOR SALE

MULTI-FAMILY LAND

HIGH POINT MULTI-FAMILY WEST DES MOINES, IA

LOT SIZE

19.56 ACRES

ALLOWED USES

TOWNHOMES, ROW HOUSES,
APARTMENTS

SALE PRICE

\$4.25 PSF

ZONING

RH-18
ALLOWS FOR 18 UNITS PER ACRE

CONTACT

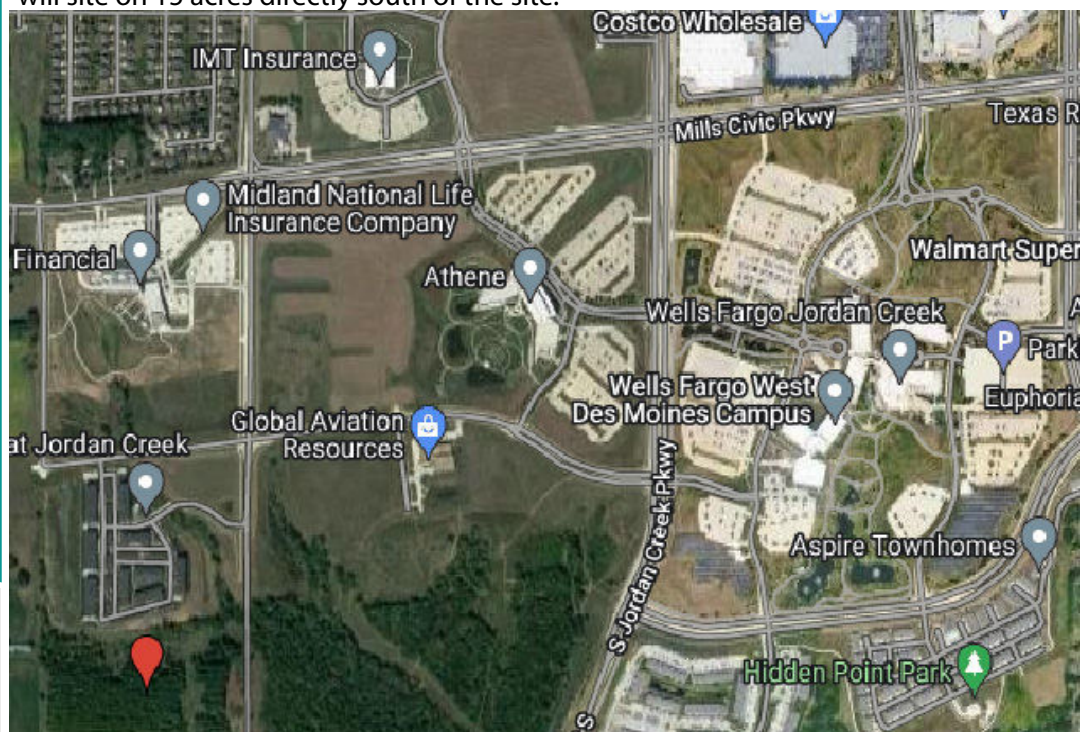
Brian McMurray

515-229-8337

brian@vistarei.com

PROPERTY INFORMATION

This high density 19.56 acre parcel within the High Point development is perfectly located within the western portion of West Des Moines. Amenities, schools/universities and large employers surround this site which include; Des Moines University, Wells Fargo Corporate Campus, Athene, Sammons Group, future Top Golf location directly to the north, Jordan Creek Town Center, MidAmerican RexPlex, and the future Great Wolf Lodge. This parcel has already been zoned for high density (RH-18) and will have S 81st st. and Stagecoach Dr constructed. The remaining portions of the development will feature approximately 70 single family lots and a 55+ detached townhome project that will site on 15 acres directly south of the site.



REAL ESTATE | DEVELOPMENT | INVESTMENTS

VISTA REAL ESTATE

Brian McMurray
2400 86th St. Suite 24
Urbandale, IA 50322
515-229-8337
brian@vistarei.com

www.vistalots.com

WWW.VISTALOTS.COM